

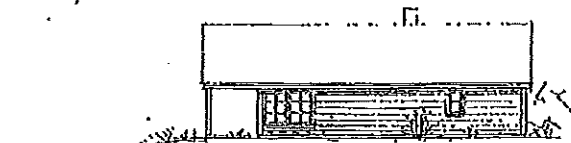
6.6 + 5.4

BREIM

BREIMSLIA - Gloppen

bxl: 6.6x12.0 m
(+ 5.4x11.0 m)

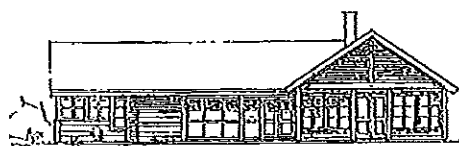
BRA 115,0 m²



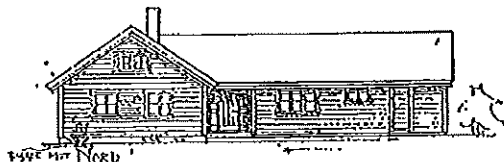
TSIDE HIT AUST



TSIDE HIT VEST

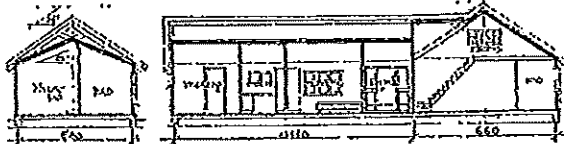


TSIDE HIT SØR

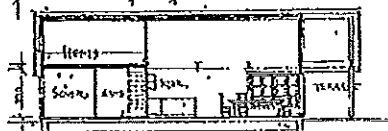


TSIDE HIT NORD

snitt A-A



snitt B-B



28.0 m²
HEMS

snitt C-C

